

StressTester™ Installation

User's Guide



Version 6.0

Copyright

Copyright © 2004, 2005, 2006, 2007, 2008, 2009 Reflective Solutions Ltd.
All rights reserved.

Restricted Rights Legend

This software and documentation is subject to and made available only pursuant to the terms and conditions of the Reflective Solutions Ltd. license agreement and may be used or copied only in accordance with the terms of that agreement. It is against the law to copy the software except as specifically allowed in the agreement. This document may not, in whole or in part, be copied, photocopied, reproduced, translated or reduced to any electronic medium or machine-readable form without prior consent, in writing, from Reflective Solutions Ltd.

Information in this document is subject to change without notice and does not represent a commitment on the part of Reflective Solutions Ltd.

THE SOFTWARE AND DOCUMENTATION ARE PROVIDED "AS IS" WITHOUT WARRANTY OF ANY KIND INCLUDING WITHOUT LIMITATION, ANY WARRANTY OF MERCHANTABILITY OR FITNESS FOR A PARTICULAR PURPOSE. FURTHER REFLECTIVE SOLUTIONS LTD. DOES NOT WARRANT, GUARANTEE OR MAKE ANY REPRESENTATIONS REGARDING THE USE OR THE RESULTS OF THE USE, OF THE SOFTWARE OR WRITTEN MATERIAL IN TERMS OF CORRECTNESS, ACCURACY, RELIABILITY OR OTHERWISE.

Trademarks or Service Marks

jTune™ and StressTester™ are registered trademarks of Reflective Solutions Ltd.

All other trademarks are the property of their respective companies.

Contents

Introduction	4
Supported Platforms	4
Supported Operating Systems	4
Supported Relational Databases.....	5
Installation Pre-Requisites	6
StressTester™ Distribution	6
Checking the Java version	6
Identifying the StressTester™ Database	7
Installing on Microsoft Windows	8
Overview Screen	8
User License Agreement.....	9
Select StressTester™ Components.....	10
Java and Installation Locations	11
Database Selection	12
Database Connection Details.....	12
Pre-Installation Summary.....	14
Setup Shortcuts.....	15
Start StressTester™	15
Installation on Other Platforms	16

Introduction

This user guide details the pre-requisites and steps required to install StressTester™.

It covers installation on the main supported StressTester™ platforms, as well as how to install individual StressTester™ components – for example a StressTester™ Injector or Monitor Agent.

Supported Platforms

StressTester™ is implemented 100% in Java and utilises a relational database for its data repository. Therefore, there are in theory a multitude of supported platform combinations.

Reflective Solutions has certified release 6.0 of StressTester™ to be supported on the platforms listed below.

If you need to run StressTester™ on any other platform, please contact Reflective Solutions Support (support@reflective.com) for latest support information and assistance. Just because a platform or database is not listed in this guide, it does not necessarily mean that StressTester™ will not run on the platform.

Supported Operating Systems

Any of the following with Java version 1.5 / 5 or 6 installed:

- Windows 2000
- Windows 2003
- Windows XP
- Red Hat Enterprise 4 ¹
- Solaris 9 and 10 ¹
- Apple Mac

¹ At present, only StressTester™ Injectors and Resource Monitors are supported to be run on this platform

Supported Relational Databases

StressTester™ is supported on the following databases:

- Derby 10.3.3²
- Oracle 9i
- Oracle 10g
- SQL Server 2005 sp2

² This is the database that is installed with StressTester™ by default, but due to the limitations of the Derby database, should not be used to execute major performance tests.

Installation Pre-Requisites

StressTester™ Distribution

You can obtain a StressTester™ distribution from many sources: the StressTester™ website by following the download procedure; on a distribution CD or via Reflective Solutions Support.

You should ensure you choose a distribution targeted for your chosen platform. In addition, if you intend only to install one component of StressTester™ - for example an Injector or Monitor Agent – separate smaller distributions are available for each of these.

Checking the Java version

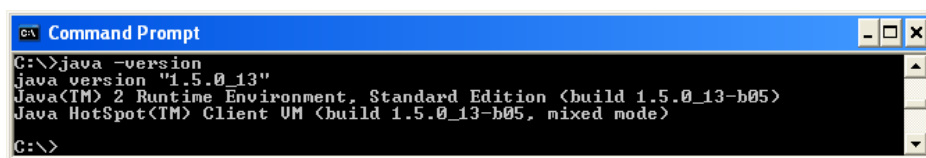
StressTester™ requires Java version 5 or higher to be installed.

To check your Java version, run a command or shell window and type the following command:

```
java -version
```

You should ensure that the version reported is 1.5 or higher.

An example of the output of the above command is shown below.



```
Command Prompt
C:\>java -version
java version "1.5.0_13"
Java(TM) 2 Runtime Environment, Standard Edition (build 1.5.0_13-b05)
Java HotSpot(TM) Client VM (build 1.5.0_13-b05, mixed mode)
C:\>
```

Identifying the StressTester™ Database

As mentioned above, StressTester™ uses a relational database as its data repository.

The StressTester™ installation – with the exception of when the automatic installer is used and the ‘Embedded Database’ option is selected – needs a database to exist already.

The details you need for the database are as follows:

- The machine on which the database management system (DBMS) is installed
- The name of the database. The database must not already contain a StressTester™ installation.
- A username to access the database that has permission to create tables and other database objects
- The password for the username

In addition, if you are not using the Embedded Database, you need to ensure your DBMS is configured to accept JDBC³ connections – as this is the means by which StressTester™ connects to its database.

³ Java Database Connectivity – the normal method by which Java programs connect to a relational database.

Installing on Microsoft Windows

To install StressTester™ on a Microsoft Windows platform, the distribution you should obtain is the automated installer.

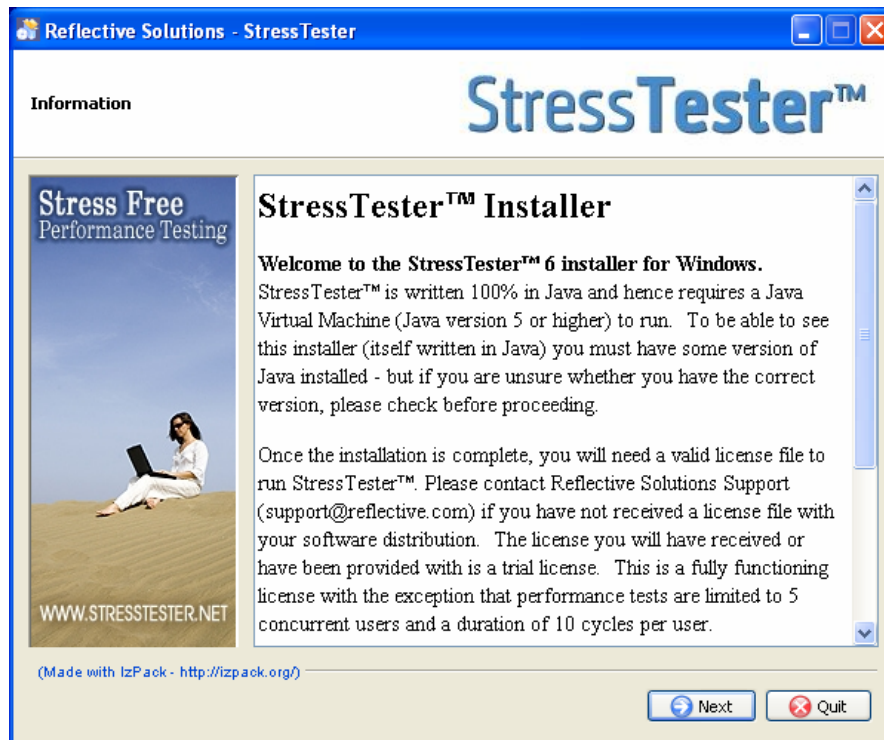
This distribution is a compressed file and should be extracted to a temporary folder. The distribution contains two files:

- an install command file
- a Java archive

To install StressTester™, simply run the install command to run the automated installer.

Overview Screen

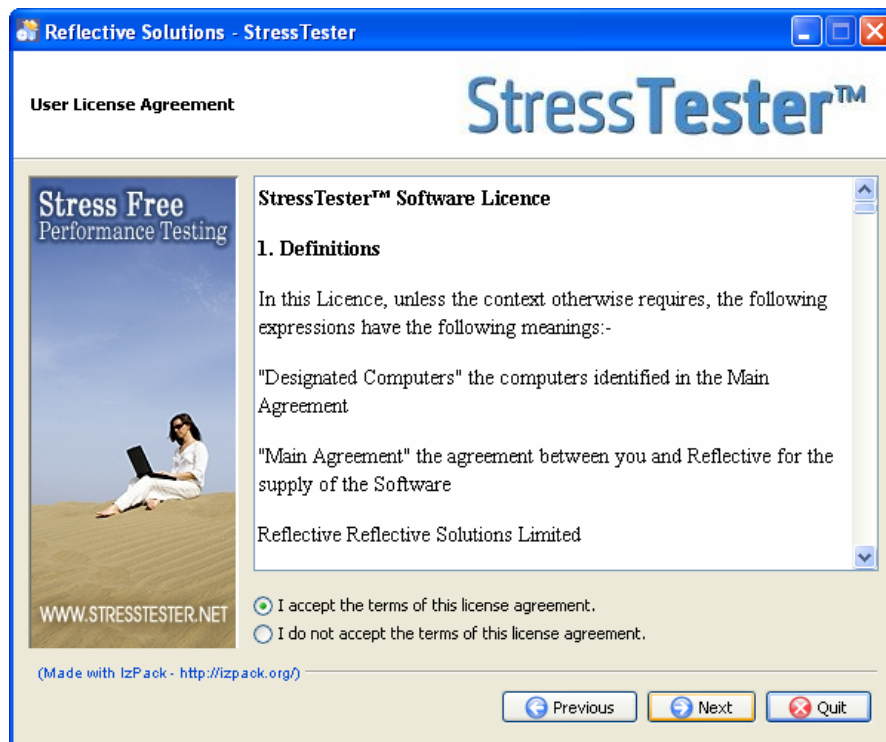
The first screen displayed provides information on StressTester™ 6 and the installation process.



When you have read the information, click “Next” to proceed.

User License Agreement

The next step of the installation is to read the StressTester™ Software License and select the appropriate option to indicate you either accept or decline the license terms.

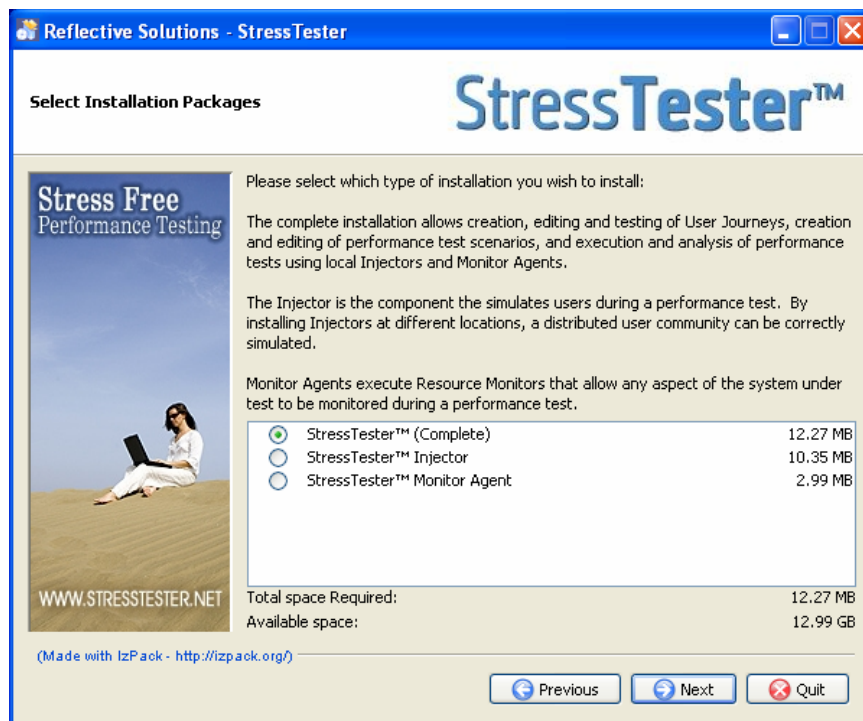


If you accept the terms of the license, click “Next” to proceed.

Select StressTester™ Components

The automated installer can be used to install one or more of the following StressTester™ components:

- StressTester™ (Complete) – the software you use to record, configure and execute performance tests using local Injectors and Monitor Agents.
- StressTester™ Injector – the process that simulates user load
- StressTester™ Monitor Agent – the process that allows underlying system resources to be monitored



You should select the installation you require and then click the “Next” button.

Note: If you are unsure what components you require, it is recommended you install the StressTester™ (Complete) package. This contains everything required to create and execute performance tests.

Java and Installation Locations

The installer will now prompt you to specify where your Java installation is located, and choose a location for the StressTester™ installation.



The value of Java Installation Path should be the directory containing the Java runtime environment (JRE).

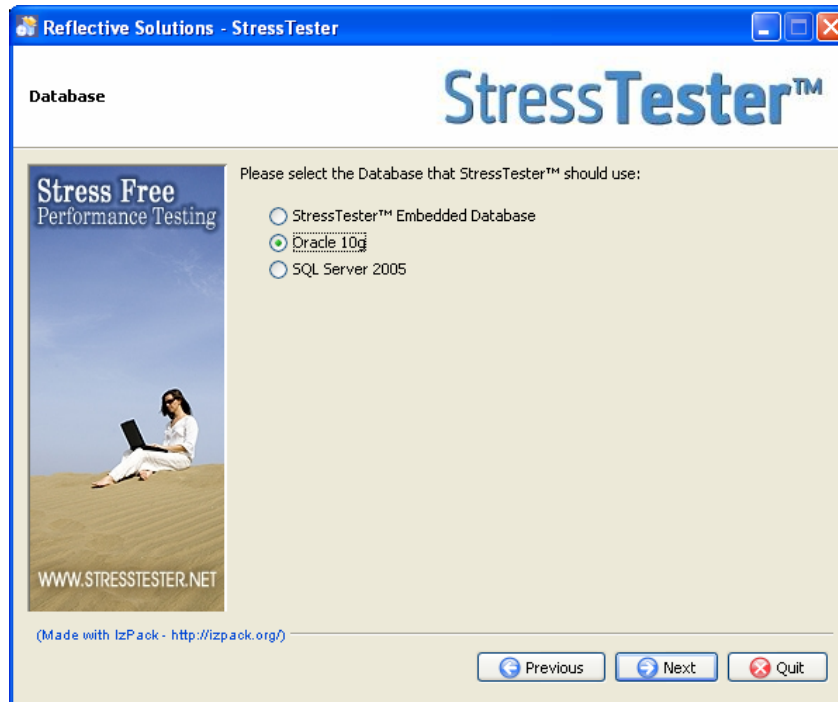
The value of Installation Directory should be a valid (although not necessarily pre-existing) directory path on the local machine.

If you are adding components to an existing StressTester™ 6 installation, you should specify the location of the installation.

IMPORTANT: This installer cannot be used to upgrade a StressTester™ 5.x, 4.x or 3.x installation.

Database Selection

Next, you will be prompted to select the database management system StressTester™ should use as its data repository.



If you choose the “StressTester™ Embedded Database” option, the installer will also install the Apache Derby database and this will be automatically configured as the StressTester™ database.

Database Connection Details

Note: This installer screen will not be shown if the embedded database was chosen in the previous step; in this case the installer will continue from the [Pre-Installation Summary](#) screen (see next section).

Database Connection Details

StressTester™

Stress Free Performance Testing

WWW.STRESSTESTER.NET

(Made with IzPack - <http://izpack.org/>)

Please enter details of how StressTester™ can connect to your database.
Before proceeding you must ensure the database name you specify below exists, and the user credentials you specify have permission to connect and create tables within the database.

Database Host Address:

Database Host Port:

Database Name:

User Name:

User Password:

Previous Next Quit

The fields on this screen specify how the other StressTester™ components should connect to the StressTester™ database, and are described in the table below.

Field	Description
Database Host Address	The name, or IP address, of the server on which the DBMS is running.
Database Host Port	StressTester™ uses a JDBC driver to connect to its database. Your DBMS must be configured to allow JDBC ³ connections and this field used to specify the port to which such connections can be made. The default shown is the DBMS' default connection port.
Database Name	The name of an existing empty database.
User Name	The name of a user with permission to connect to the database and create tables and other database objects (database owner privileges are recommended).
User Password	The password for the specified user.

When you click “Next” on this screen, StressTester™ will attempt to create a connection to the specified database and check that the user name and password have the correct database permissions.

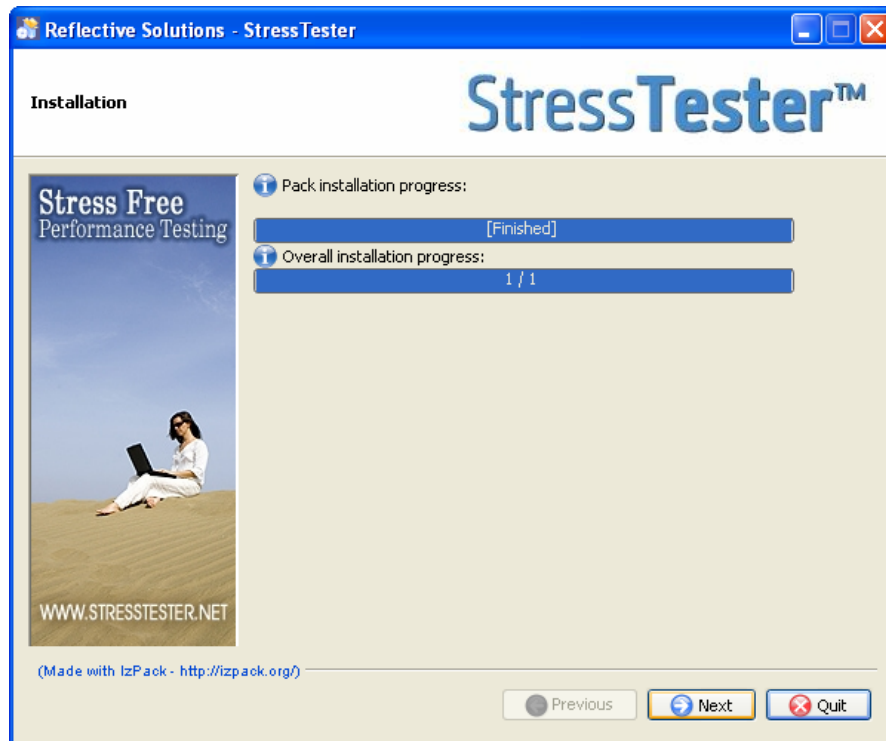
If the connection, authentication or permission check fails, you will be shown an appropriate error message. You should then correct the problem and try again. Remember, as with all installation issues; if you require assistance please contact Reflective Solutions Support.

Pre-Installation Summary

You will now be presented with a summary of the information you have entered.

If any of the information is incorrect, you can click “Previous” the appropriate number of times and change entered values.

When you are happy with the information displayed, click “Next” to install StressTester™.



The installer will then show progress as it installs StressTester™ and when the installation is complete, you should click the “Next” button.

Setup Shortcuts

The penultimate installation step allows you to configure shortcuts to start the StressTester™ user interface.



Start StressTester™

The final step is to first view the Read Me file for late information, and then to click the “Start StressTester™” button to start the StressTester™ user interface.

Installation on Other Platforms

For detailed instructions on how to install StressTester™ components on non-Microsoft Windows platforms, please contact Reflective Solutions Support.